



Department
of Energy &
Climate Change

UK GHG Inventory and atmospheric verification

Laura Bates, DECC

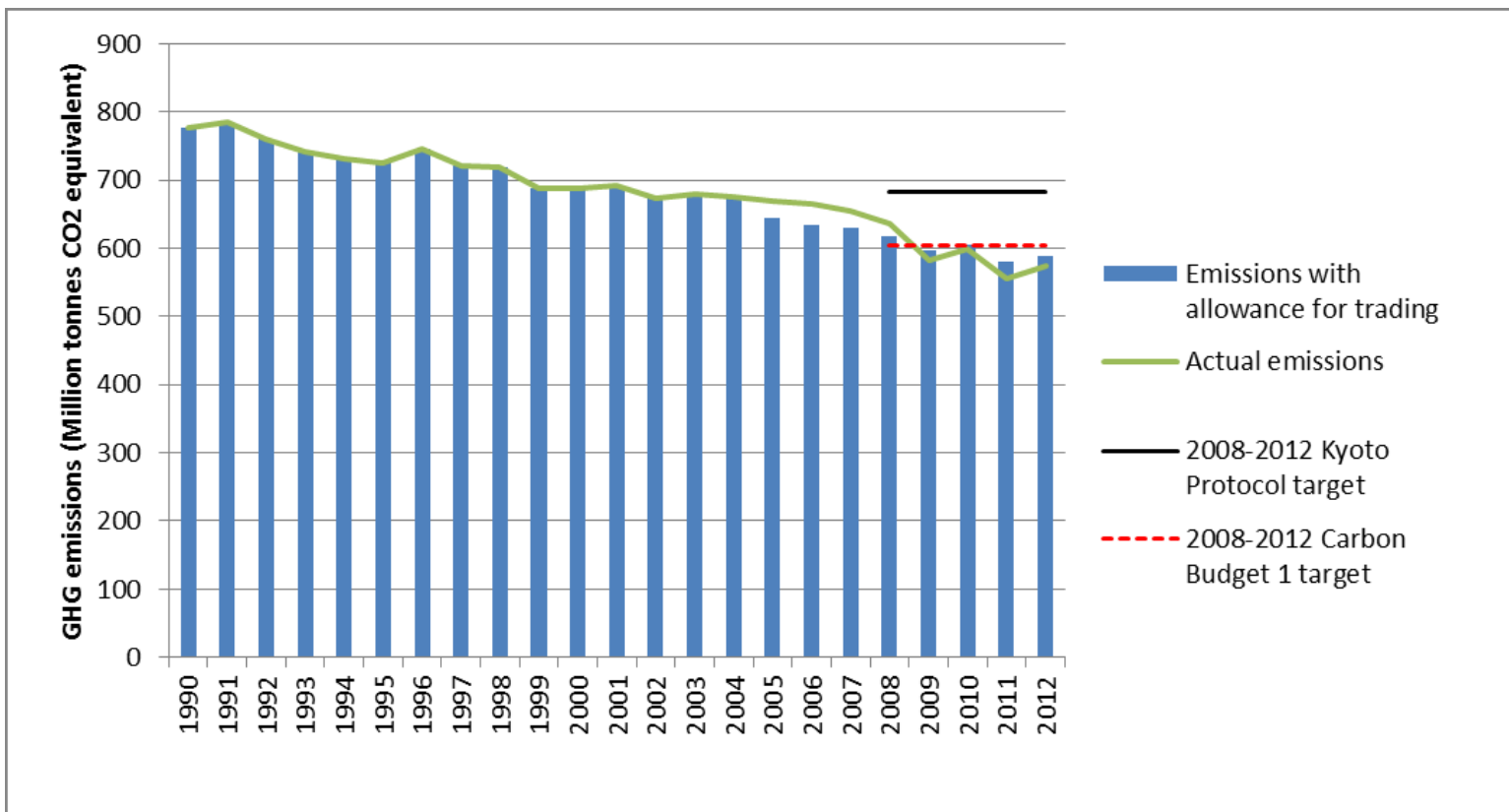


DECC manage the UK's GHG inventory

- DECC are the Single National Entity with overall responsibility for the UK GHG inventory.
- The inventory is compiled by a consortium led by Ricardo-AEA.
- The agriculture and LULUCF inventories are covered by separate contracts, but feed into the overall GHG inventory.

The inventory is used to report against the UK's domestic and international emissions reduction targets

UK progress against Kyoto Protocol and carbon budget targets



Atmospheric monitoring is used to verify the UK's GHG inventory

Tacolneston, Norfolk



Angus, Edinburgh



The DECC network consists of 4 tall towers in the UK and Ireland

Mace Head, Ireland



Ridge Hill, Herefordshire



This verification work is seen as good practice according to international inventory guidance

- Top-down check for GHG Inventory verification
- Important to take account of uncertainties – in the inventory and in the observations
- Gain understanding of global concentrations and how they are changing
- Inform GHG inventory improvement work

The GHG Emissions and Feedbacks programme is an opportunity to extend this verification work

DECC interests include:

- Estimates of anthropogenic CO₂ emissions
- Improving geographical resolution of emissions estimates from atmospheric observations
- Continuing to improve accuracy and precision of emissions estimates from atmospheric observations work, and reduce uncertainties
- Explore and investigate our understanding of the discrepancies between the GHG Inventory and trends resulting from atmospheric observations and modelling.
- Sectoral emissions estimates for inventory verification